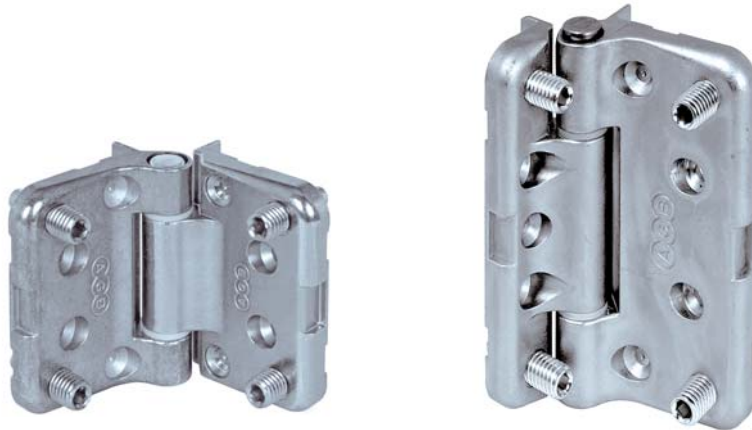


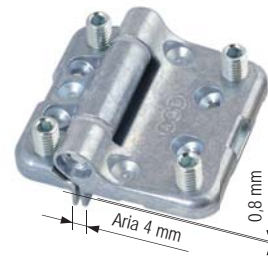
Maxi

Hinge for 3 and 4 sashes windows



Maxi is a surface mounted hinge with a great loading capacity, and an easy and fast assembly.

The non-coplanar bases of the hinge avoid the spring effect of the sash due to the overpressure of the gaskets.



MAXI range is available in different models with two loading capacities: length 60 mm for windows and 90 mm for doors. Symmetrical version for windows with reported jamb and asymmetrical; versions for inside and outside openings.

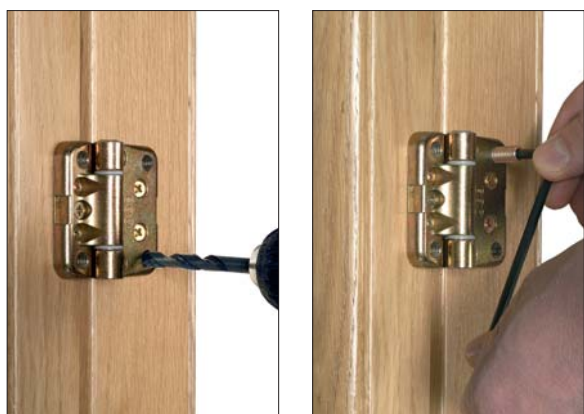


Maxi hinges with security grub screw and antiburglar inserts for outside opening application are available (e.g. outside flush main doors, shutters with articulated sashes).



Covers come in seven different finishes: Nickel plated, light bronze plated, matt nickel plated, Silver, brass plated, brown, RAL. 9010 and RAL. 9001 white.

Maxi Hinge for 3 and 4 sashes windows



The auto-jig hinge leads the drilling of the wood for the mounting of 4 sturdy self-threading loading pins.



The hinge is made of two asymmetrical parts, designed to use it on all windows profiles and sections even the most narrow.

60 mm MAXI HINGE APPLICATION FIELDS													
2400	3	3	3	3	3	3							
2300	3	3	3	3	3	3							
2200	3	3	3	3	3	3							
2100	3	3	3	3	3	3							
2000	3	3	3	3	3	3	3						
1900	3	3	3	3	3	3	3						
1800	3	3	3	3	3	3	3	3					
1700	2	2	2	2	2	2	2	2					
1600	2	2	2	2	2	2	2	2					
1500	2	2	2	2	2	2	2	2					
1400	2	2	2	2	2	2	2	2	2				
1300	2	2	2	2	2	2	2	2	2				
1200	2	2	2	2	2	2	2	2					
1100	2	2	2	2	2	2	2	2					
1000	2	2	2	2	2	2	2	2	2				
900	2	2	2	2	2	2	2	2	2	2			
800	2	2	2	2	2	2	2	2	2	2			
700	2	2	2	2	2	2	2	2	2	2			
600	2	2	2	2	2	2	2	2	2	2			
↑ HBB	300	400	500	600	700	800	900	1000	1100	1200	1300	1400	1500
LBB	⇒												

90 mm MAXI HINGE APPLICATION FIELDS													
2400	3	3	3	3	3	3	3	3					
2300	3	3	3	3	3	3	3	3					
2200	3	3	3	3	3	3	3	3					
2100	3	3	3	3	3	3	3	3					
2000	3	3	3	3	3	3	3	3	3				
1900	3	3	3	3	3	3	3	3	3				
1800	3	3	3	3	3	3	3	3	3	3			
1700	2	2	2	2	2	2	2	2	2	2			
1600	2	2	2	2	2	2	2	2	2	2			
1500	2	2	2	2	2	2	2	2	2	2			
1400	2	2	2	2	2	2	2	2	2	2	2		
1300	2	2	2	2	2	2	2	2	2	2	2		
1200	2	2	2	2	2	2	2	2	2	2			
1100	2	2	2	2	2	2	2	2	2	2			
1000	2	2	2	2	2	2	2	2	2	2	2		
900	2	2	2	2	2	2	2	2	2	2	2	2	
800	2	2	2	2	2	2	2	2	2	2	2	2	
700	2	2	2	2	2	2	2	2	2	2	2	2	
600	2	2	2	2	2	2	2	2	2	2	2	2	
↑ HBB	300	400	500	600	700	800	900	1000	1100	1200	1300	1400	1500
LBB	⇒												

LEGEND

- Application field with glass weight up to 20 kg/m² (8 mm glass thickness)
- Application field with glass weight up to 30 kg/m² (12 mm glass thickness)
- Application field with glass weight up to 40 kg/m² (16 mm glass thickness)
- Application field with glass weight up to 60 kg/m² (24 mm glass thickness)
- Application field not allowed*

3 Application field allowed with 3 hinges

2 Application field allowed with 2 hinges

Note:

- Tests carried out with 2 hinges for SRH from 600 to 1700 mm and 3 hinges from 1800 to 2400 mm (application: central position).
- Distance from external rebate of the hinge: 100 mm up to 1000 mm SRH and 150 mm from 1000 to 2400 mm.
- Inclined screws only (ø4x35 mm) and M.8 threaded pins (ø7,2 mm pin for drilling).
- Wood: Larch.

*Application field not allowed: the free corner (not hinged) lowers more than 1 mm.