

Mod. 600 ARIETE Knob-Key



Characteristics

- Brass cylinder with turn knob and profiled nickel plated brass key.
- Security class 2 (UNI 9570).
- 4 or 5 brass tumblers.
- Sintered steel bit.
- 3 keys.
- The fixing screw is supplied with the lock.

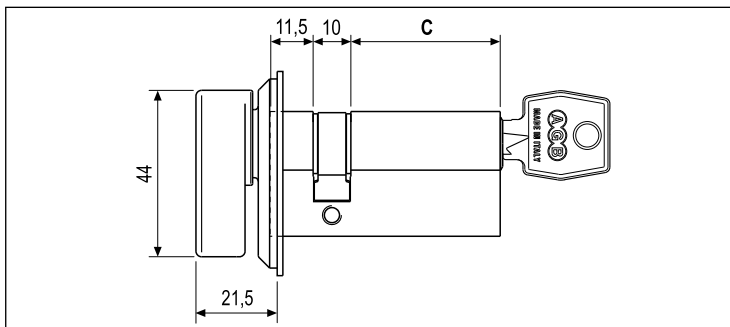
Note. This model cannot be used with Tenax but with escutcheon H32302.00.99.

Application

For shutter that can be opened from the outside with key and from the inside with the knob, much easier. Supplied with adapter for covering of the lock and the knob already assembled to make the assembly easier and faster. The fixing screw is supplied with Ariete lock kit.

Plain brass

Article	C	No. of tumblers	S
C67501 YY	35	5	21÷26
C67501 YY	40	5	26÷31
C67501 YY	45	5	31÷36
C67501 YY	50	5	36÷41
C67501 YY	55	5	41÷46
C67501 YY	60	5	46÷51
C67501 YY	65	5	51÷56
C67501 YY	70	5	56÷61
C67501 YY	75	5	61÷66

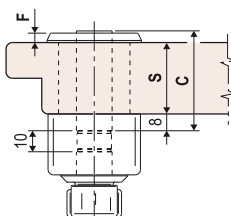


YY = 10 (BLACK knob)
21 (SILVER knob)

Calculation formulas for the choice of the cylinder "C" dimension according to the shutter adapter

WOOD

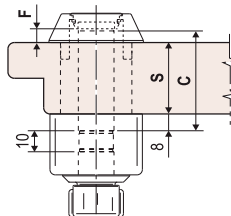
Example with ESCHUTCHEON



Formula for wood **C = S + F + 8**

Shutter thickness (S) = 40 mm
F Eschutcheon = 4,5 mm
C = 40 + 4,5 + 8 = 52,5 mm
Choose a cylinder of "C" 55 mm (CX7516.10.55)

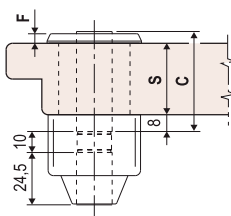
Example with TENAX



max. S = 45 mm with screws of 70
55 mm with screws of 80

Shutter thickness (S) = 40 mm
F Tenax = from 1 to 6 mm
C = 40 + 5 + 8 = 53 mm
Choose a cylinder of "C" 50 mm (CX7516.10.50) *

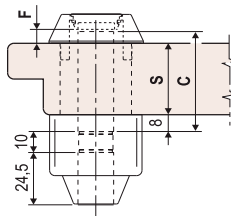
Example with ESCHUTCHEON



Formula for wood **C = S + F + 8**

Shutter thickness (S) = 40 mm
F Eschutcheon = 4,5 mm
C = 40 + 4,5 + 8 = 52,5 mm
Choose a cylinder of "C" 55 mm (CXXXXX.25.55)

Example with TENAX

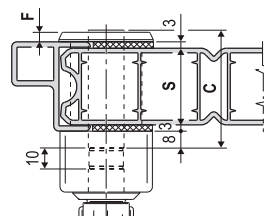


max. S = 45 mm with screws of 70
55 mm with screws of 80

Shutter thickness (S) = 40 mm
F Tenax = from 1 to 6 mm
C = 40 + 5 + 8 = 53 mm
Choose a cylinder of "C" 50 mm (CXXXXX.25.50) *

PVC and Aluminium

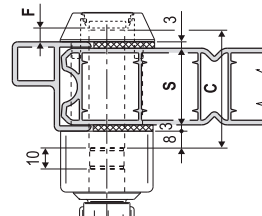
Example with ESCHUTCHEON



Formula for PVC and Aluminium **C = S + 3 + 3 + F + 8**

Shutter thickness (S) = 40 mm
F Eschutcheon = 4,5 mm
C = 40 + 3 + 3 + 4,5 + 8 = 58,5 mm
Choose a cylinder of "C" 60 mm (CX7516.10.60)

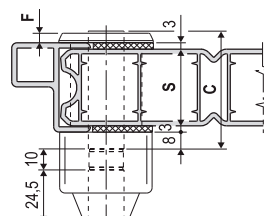
Example with TENAX



max. S = 45 mm with screws of 70
55 mm with screws of 80

Shutter thickness (S) = 40 mm
F Tenax = from 1 to 6 mm
C = 40 + 3 + 3 + 5 + 8 = 59 mm
Choose a cylinder of "C" 55 mm (CX7516.10.55) **

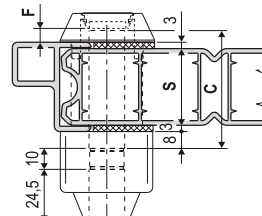
Example with ESCHUTCHEON



Formula for PVC and Aluminium **C = S + 3 + 3 + F + 8**

Shutter thickness (S) = 40 mm
F Eschutcheon = 4,5 mm
C = 40 + 3 + 3 + 4,5 + 8 = 58,5 mm
Choose a cylinder of "C" 60 mm (CXXXXX.25.60)

Example with TENAX



max. S = 45 mm with screws of 70
55 mm with screws of 80

Shutter thickness (S) = 40 mm
F Tenax = from 1 to 6 mm
C = 40 + 3 + 3 + 5 + 8 = 59 mm
Choose a cylinder of "C" 55 mm (CXXXXX.25.55) **

* Choosing the "C" measure of 55 mm, you will overpass the max. dimension of 6 mm for cylinder protrusion and you will touch the Tenax.
** Choosing the "C" measure of 60 mm, you will overpass the max. dimension of 6 mm for cylinder protrusion and you will touch the Tenax.