



ARIETE

MULTIPOINT LOCKS FOR SHUTTERS



Open, Close, Live



ARIETE

A LOCK OF CHARACTER



Plucky and compact



Ariete is a multipoint lock with the strong character of AGB. Essential design favouring functionality. Innovative planning solutions for unrivalled safety and functionality.

No handle: the movement, smooth and light, is provided directly by the key thanks to a reduction gear.

The BlackTech painting provides high resistance to corrosion.

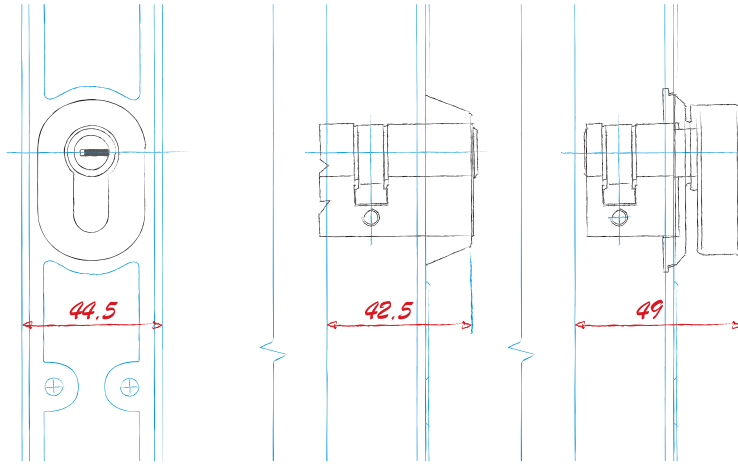
And there are advantages for the window maker, as well:

- reduced dimensions
- compatible also with aluminium windows
- a complete range of easy-to-mount solutions - a modularity devised to reduce supply on hand.



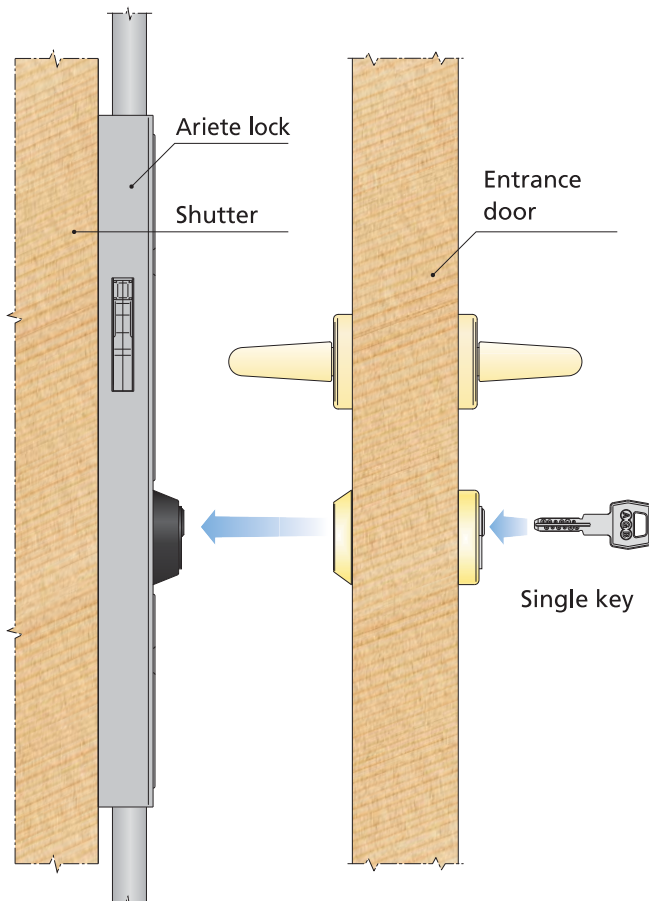
PATENTED

Reduced dimensions



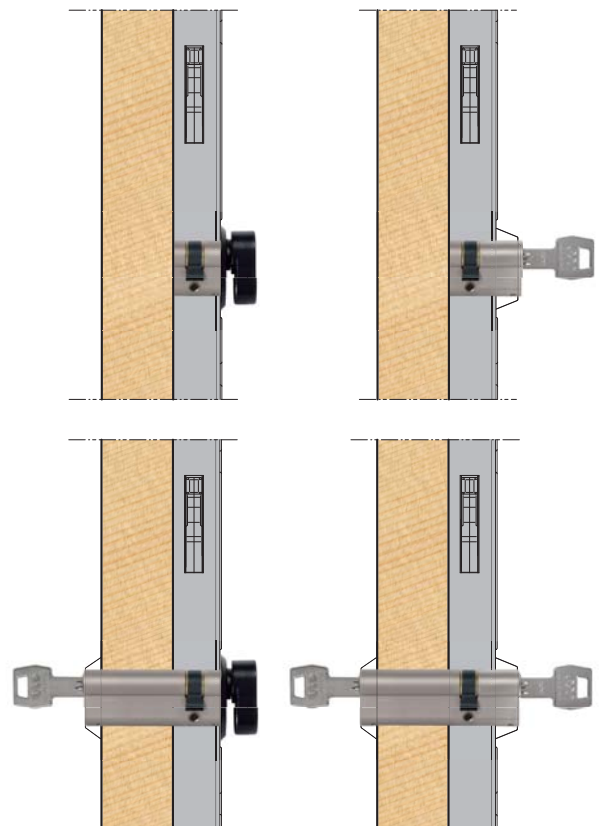
A width of only 44,5 mm and a projection of 42,5 mm, 49 mm in the knob version, make it possible to mount the lock also on windows with narrow jambs, such as the aluminium ones, and in cases in which the shutter and the door are very near.

Just one key



The cylinders can be prearranged in order to use the same key for the entrance door and the shutter.

Four ways to open



Four opening modes are available:

- 1) only from the inside:
 - inside-knob
 - inside-key
- 2) from the inside and the outside:
 - inside-knob / outside key
 - inside-key / outside key

Safe and reliable

Hook



The hook is made of two plates in tempered steel united by a pin. Its shape makes it possible to adjust the sash laterally while it guarantees a burglar-proof anchorage to the striker.

Non-handed



Lock and strikes are left/right reversible just by rotating them.
The double lateral opening is used on one side to let the hook protrude, while the other is closed with a spring cap provided with the product.

Wide range of strikers

Striker for single sash U27 for hook

Adjustable striker for double sash U30 with handle for hook

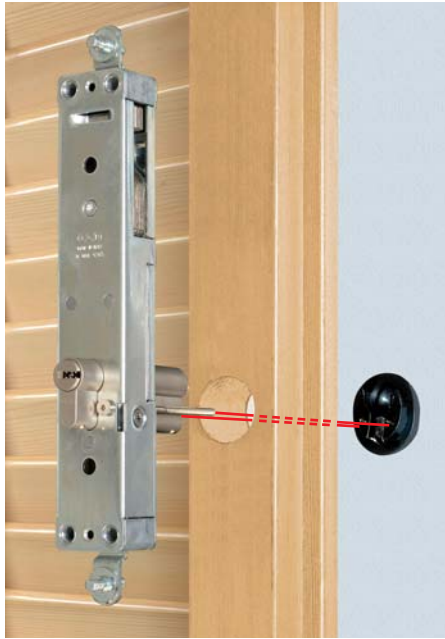
Adjustable striker for double sash U30 for hook

Striker for double sash U36 for hook



Functional and modular **AGB**

Fast and precise installation



To apply the lock, cylinder and protective rim-guard, it takes just a \varnothing 34 mm drill.

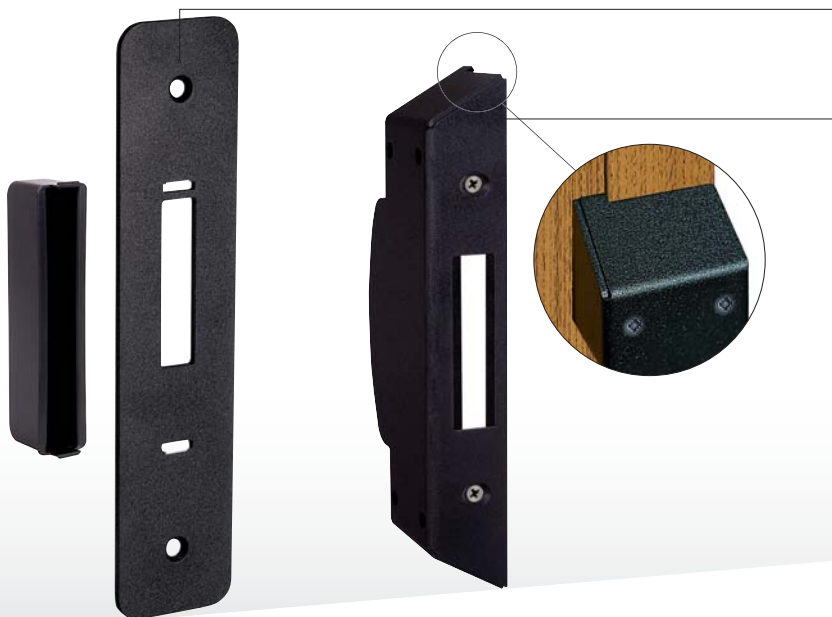


The carter can be applied with the cylinder, the adapter and the key (or the knob) already mounted.



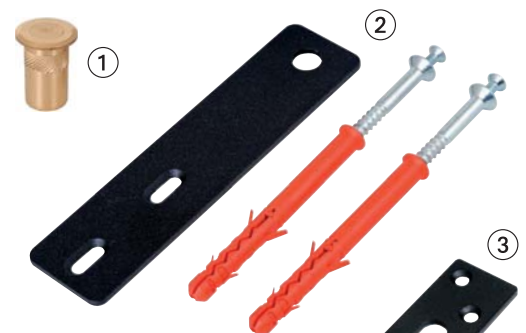
Striker for single sash U27 for hook, on wall

Wall adapter for U27 striker for hook



Striker for double sash adjustable U30 for PVC and Aluminium with 3 mm shim, for hook

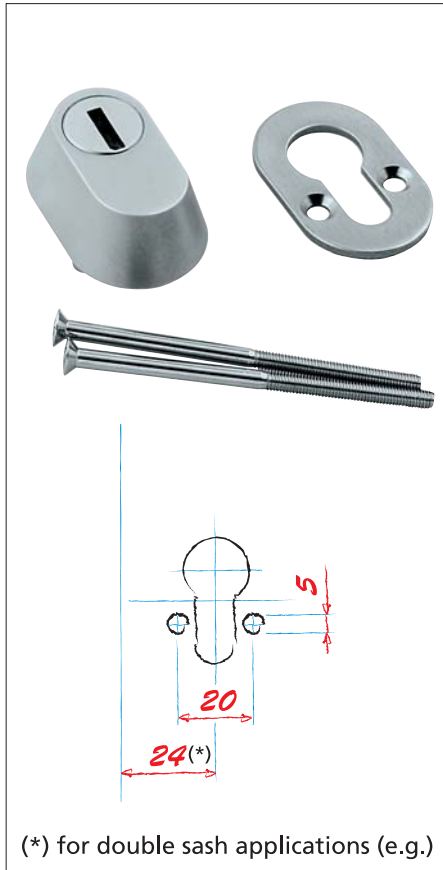
The push rod-strikes are available in various versions:



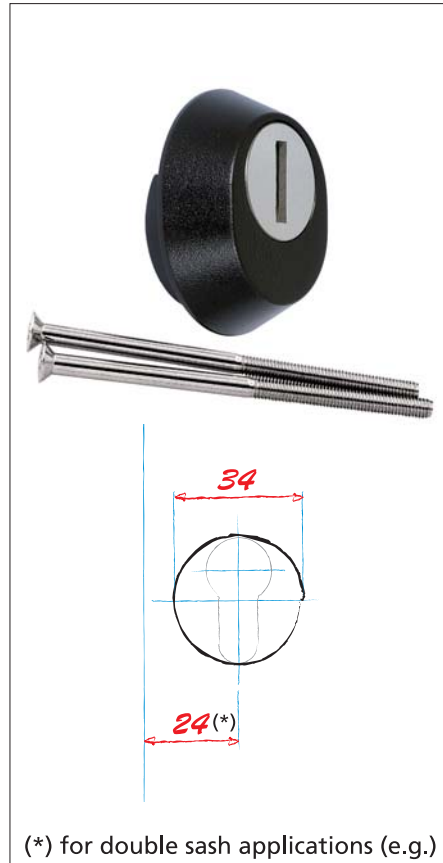
- ① for threshold
- ② for wooden frame
- ③ for insulating panels

Protective escutcheons for cylinders

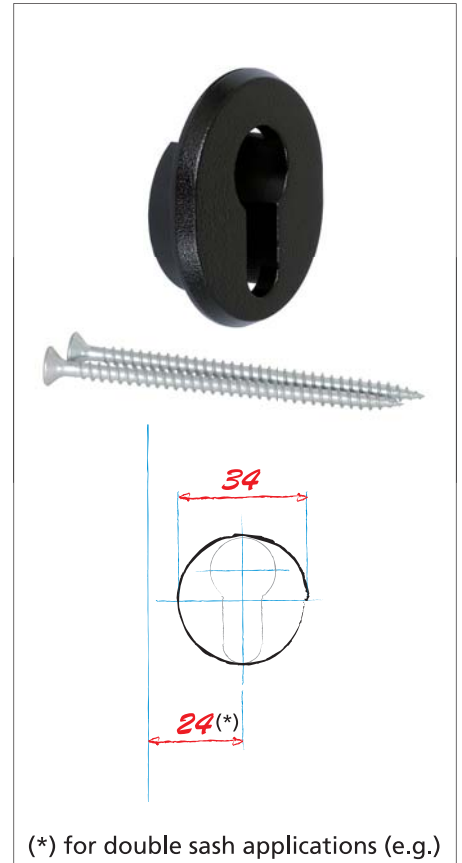
Oval TENAX



Round TENAX, ARIETE version



External escutcheon



Compatible with PVC and Aluminium profiles



Adapter for rod guide



Adapter for lock case



Adapter for round TENAX

Double Version



Triplex

Duplex

The system has triple lock with the two push rod and the middle hook, or double locking, with upper and lower push rods.

The push rod are available both straight and bent.

The telescopic rods are protected against rain and humidity infiltration through the joints.

Three locking points



Two locking points



HB 1800÷2950 (*)

HB 1750÷2900 (*)

The push rod are available both straight and bent.

(*) By trimming the telescopic rods it is possible to reach the minimum height of 1100 mm with straight and 1150 mm with bent push rods.

ENV 1627÷30:2000

Regulation for antiburglar windows

In order to define an antiburglar window, we can not trust in subjective considerations, we must rather follow the standards laid down and assimilated in the European Union. The ENV 1627÷30:2000 European regulation defines the methods to test the windows and doors and allows a classification according to the referring resistance levels. This represents the basis to correctly evaluate the antiburglar performance of a window facing its building costs.

1st resistance class



The shutter is subjected to dynamic stress with static and dynamic loads, simulating kicks, pushes with the shoulder and break in attempts by an occasional thief (without the use of tools).

2nd resistance class



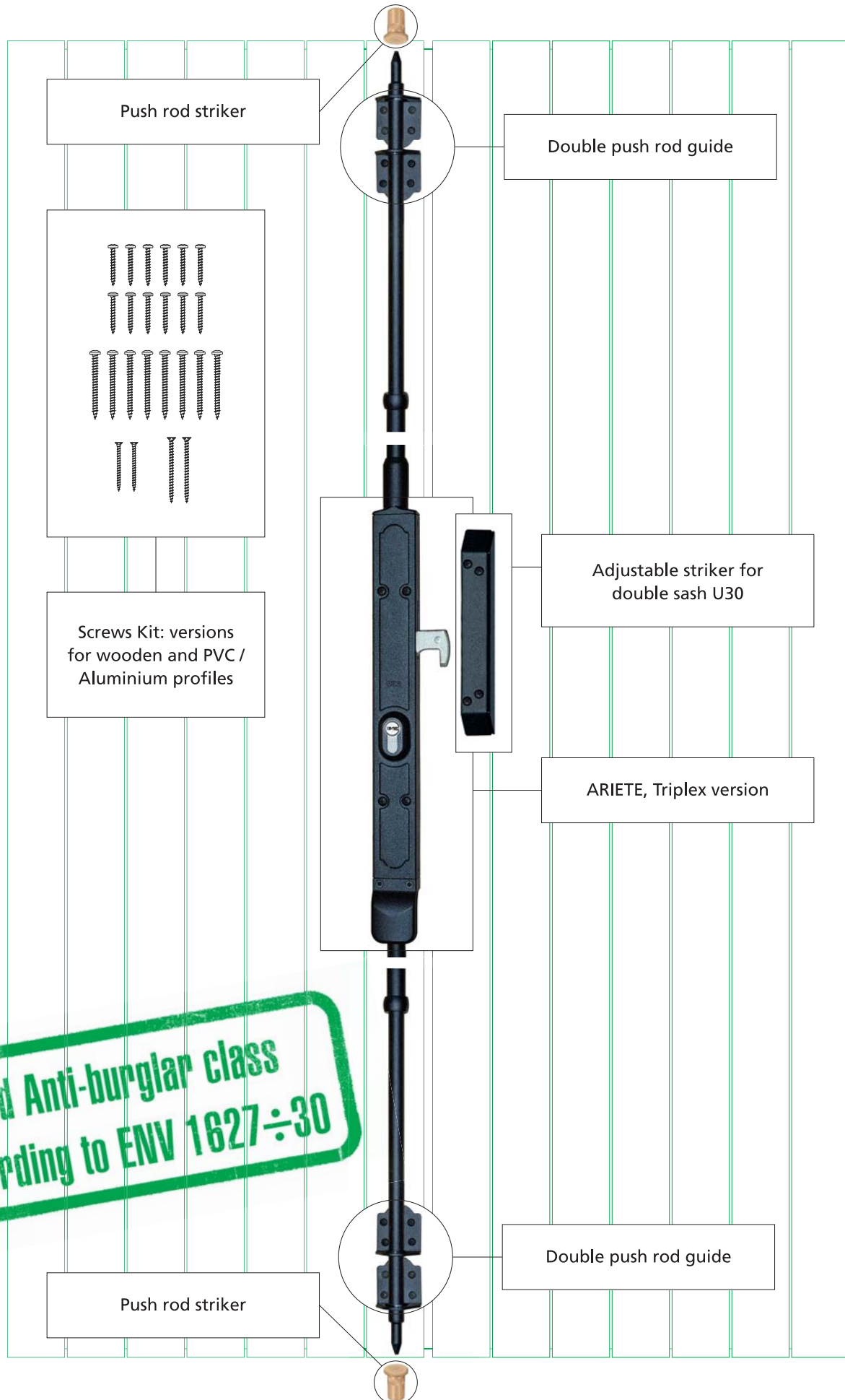
The shutter, in addition to the dynamic stress used in the 1st class, experiences break in tests by simulating an expert thief using:



- Screw driver 40 cm long
- Pliers
- Spanner

- Additional screw driver
- Wedges

Configuration for 2nd class resistance





Open, Close, Live

Alban Giacomo SpA
Via A. de Gasperi 75
36060 Romano d'Ezzelino (VI) Italy
Tel. +39 0424 832 832
www.agb.it - info@agb.it